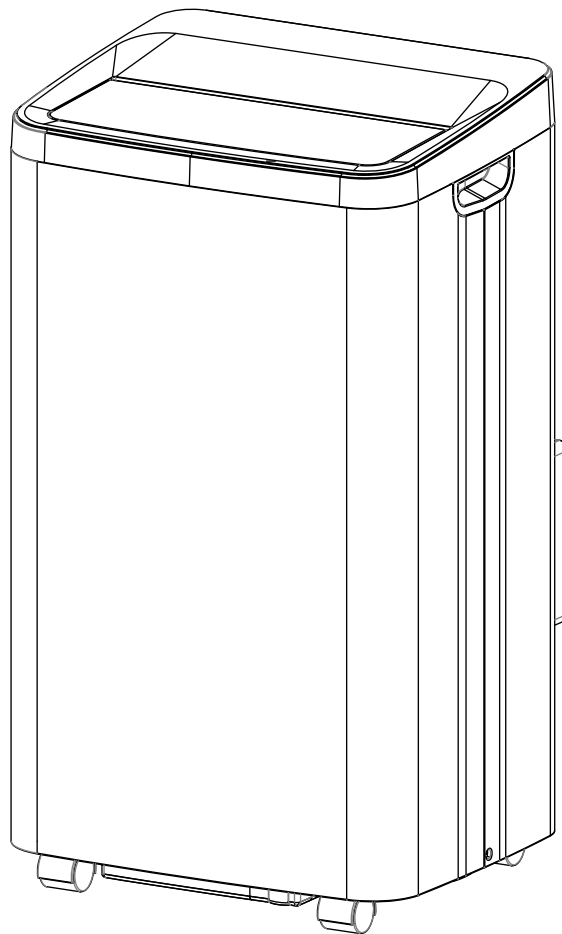


# PORTABLE AIR CONDITIONER

## Use and Care Manual



**PSH-09-01T**

# INTRODUCTION

Thank you for choosing a Soleus Air Portable Air Conditioner. This Owner's Manual will provide you with valuable information necessary for the proper care and maintenance of your new product.

Please take a few moments to thoroughly read the instructions and familiarize yourself with all the operational aspects of your new Soleus Air Portable Air Conditioner.

For your own records, please attach a copy of your sales receipt to this manual.

Also, write the store name/location, date purchased, and serial number below:

Store Name: \_\_\_\_\_

Location: \_\_\_\_\_

Date Purchased: \_\_\_\_\_

Serial Number (located on back of unit): \_\_\_\_\_

Before installing and using your portable air conditioner, please read this owner's manual carefully. Store this manual in a safe place for future reference.

- 1) Always place the unit on a level surface.
- 2) Never use or store gasoline or other flammable vapor or liquid near this unit unless instructed by this manual.
- 3) At least 50 cm air space between front/left/right/top sides of portable air conditioner and at least 80 cm air space between rear of portable and adjacent obstacle should be maintained during normal operation. Do not block or cover air inlet or outlet grilles.
- 4) The unit must be connected to a correctly grounded power supply.
- 5) Do not start or stop the unit by inserting or pulling out the power plug.
- 6) Do not use an adapter plug or extension cord.
- 7) Do not use the unit directly by a bathtub, shower or swimming pool.
- 8) Do not insert anything into the air outlet. Do not obstruct air inlet or outlet grills unless instructed by this manual.
- 9) Do not let children play near this unit.
- 10) Always inspect the cord for signs of damage before use. If the power cord is damaged, it must be replaced by the manufacturer or a qualified service technician.
- 11) When cleaning the unit, always turn the unit off and unplug the power cord.
- 12) Do not mix old and new batteries in the remote control.
- 13) Do not mix Alkaline, Standard (Carbon - Zinc) or Rechargeable (Nickel - Cadmium) Batteries.

# WARNING

Improper handling can cause serious damage to the appliance.  
Read this manual carefully before operating the unit.

Do not wet the housing or control panel.



Do not cover the air outlet while in use.



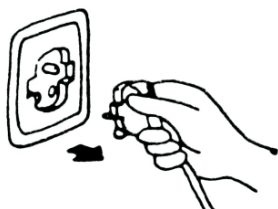
Do not allow children to play with the controls or drop any objects into the air outlet.



Do not place objects or let any person sit on top of the unit.



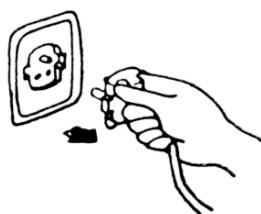
Always turn the unit off and remove the power plug from the socket when cleaning.



Do not attempt to remove any part of the casing unless by an authorised technician.



Remove the plug from the socket if the unit is not being used for long period.



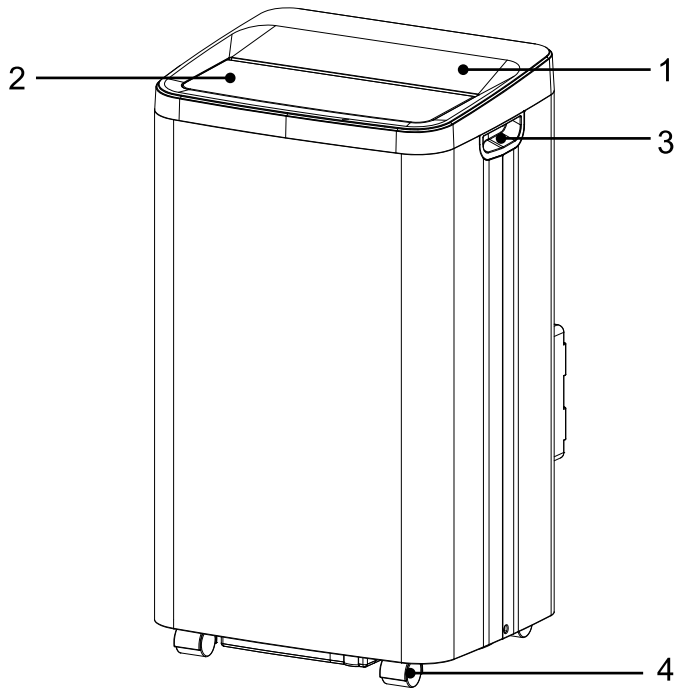
Use only the correct power supply AC 115V~60Hz.



Do not operate the unit with damaged plug or loose socket point.



# IDENTIFICATION OF PARTS



1. Control panel

2. Air outlet

3. Handle hole

4. Caster

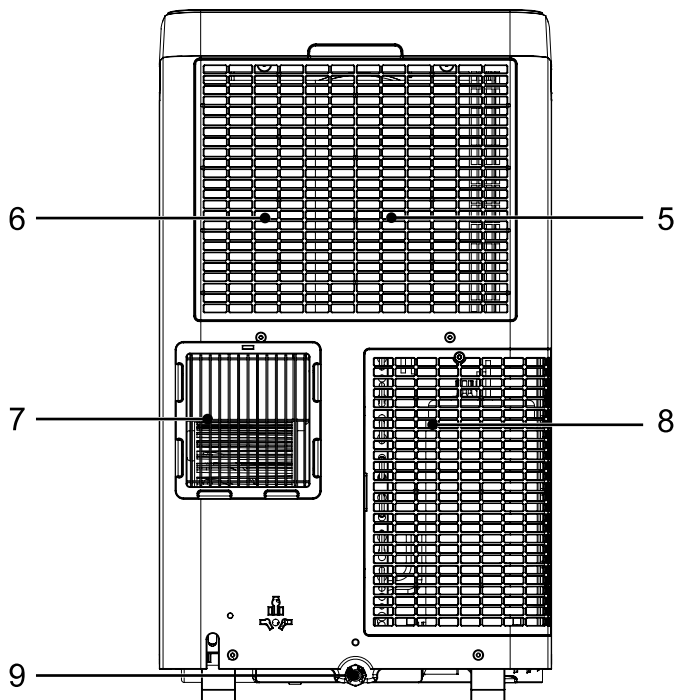
5. Air filter

6. Air intake (Evaporator)

7. Air outlet (Heat exchange)

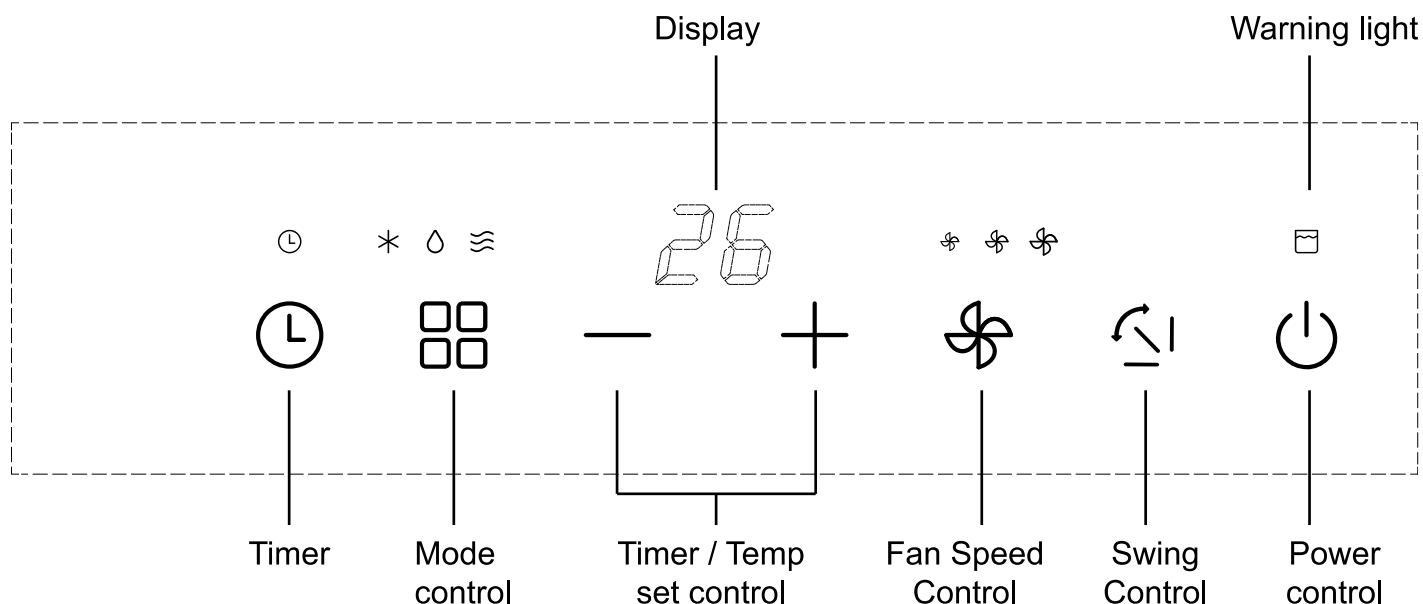
8. Air intake (Condenser)

9. Water outlet drain



Note : Please ensure if the water outlet drain is well installed before use.

# OPERATION



## Power Control

The power control turns the unit on and off.

## Mode Control

Settings:

•Cool •Dehumidify •Fan

The settings are adjusted with Mode Control button. A light will indicate which setting is currently being used.

- Cooling Mode ✱  
During the cooling mode the air is cooled and hot air is exhausted to the outside air through the exhaust tube. Adjust fan speed air through the temperature to suit your desired comfort level. Temperature setting range is 61°F ~ 89°F.  
Note : The air exchange hoses must vent outside the room when using cool mode.
- Dehumidify Mode ∇  
Air is dehumidified as it passes through the unit, without being in full cooling mode. If room temperature is higher than 77°F, fan speed can be adjusted; otherwise fan speed is fixed to "low".  
Note: If the unit is to be used as a dehumidifier, do not connect the exhaust hose let the warm air return to the room. Continuous drainage is then necessary.
- Fan Mode ≡  
Air is circulated throughout the room with no cooling.  
Note : unit does not need to be vented in Fan mode

## Fan Speed Control

The Fan Speed Control has 3 settings: High ⚙, Medium ⚙ and Low ⚙.

## Timer

Auto turn off :

With machine in running mode, press timer button for or setting timer control. Press " + " or " - " to select number of hours you would like the unit to function before it

automatically shuts off.

Auto turn on :

With machine in stand by mode, press timer button for setting timer control. Press " + " or " - " to select number of hours before the unit automatically starts running in air conditioning mode.

Note: The time is adjustable between 1-24 hours.

## Temperature Controls

- Used for adjusting the thermostat.
- The default display is room temperature.
- In cooling mode, when " + " or " - " button is pressed, the set temperature is displayed and may be adjusted. After a few seconds the display will revert back to room temperature. Temperature is only adjustable in cool mode.

Note : By pressing both " + " / " - " buttons at the same time, the display will switch between Celsius and Fahrenheit.

## Tank Full Light

If the internal tank becomes full, the Tank Full Light will turn red and the unit will not operate until the unit has been drained.

## Swing Control

The SWING button moves the grille flap, evenly distributing the air into the room.

When the SWING button is pressed, the flap will begin to move up and down alternatively.

If pressed again, the flap will be locked into its current position.

When the button is next pressed, the flap will start to move up and down again.

NOTE: in order to avoid damaging the internal mechanisms, the flap must not be moved manually.

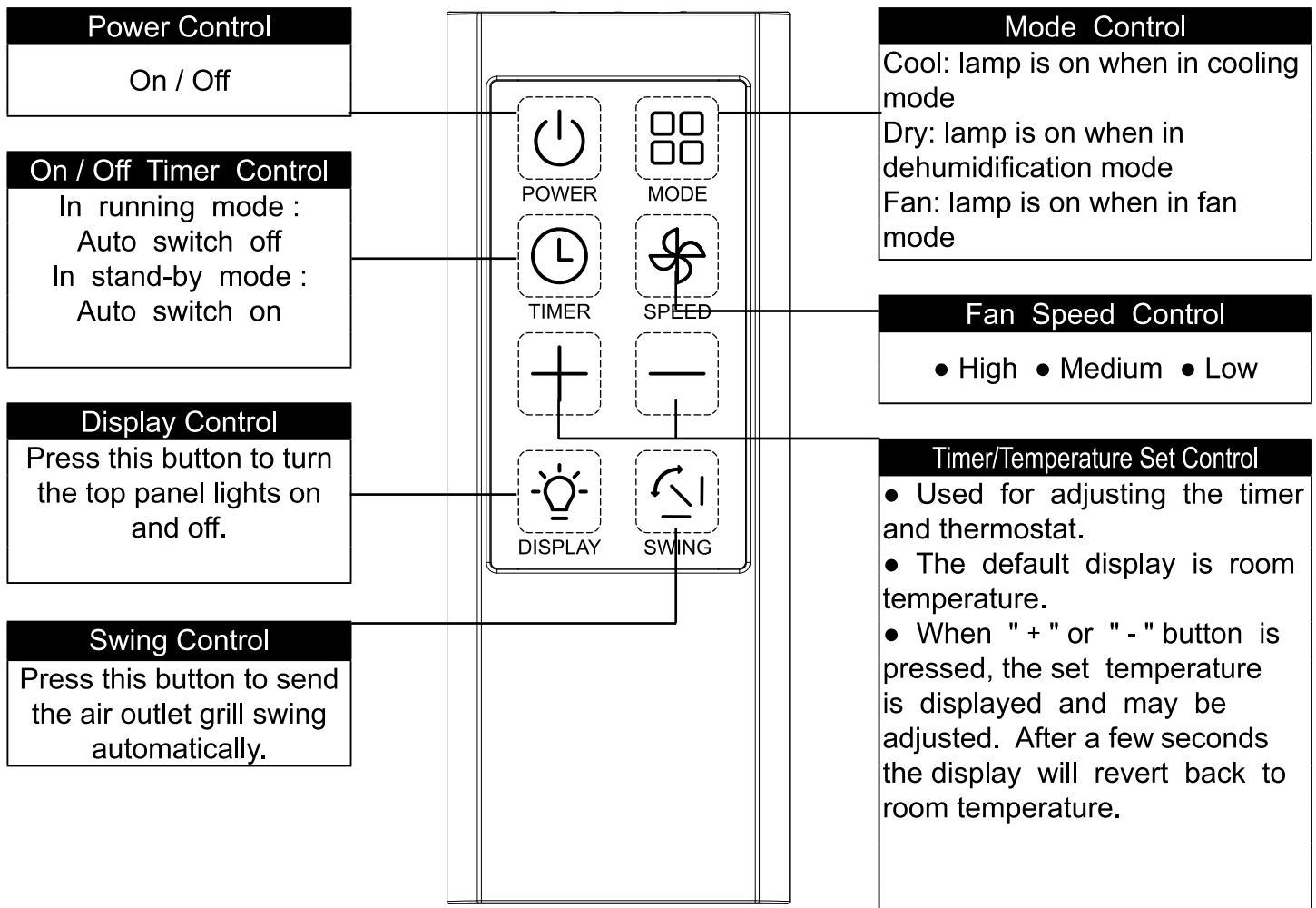
**Note : After switching the air conditioner off, you must wait 3 minutes before switching it**

# OPERATION

Air Conditioner Remote Control (batteries not included)

The functions work the same as your air conditioner's touch controls.

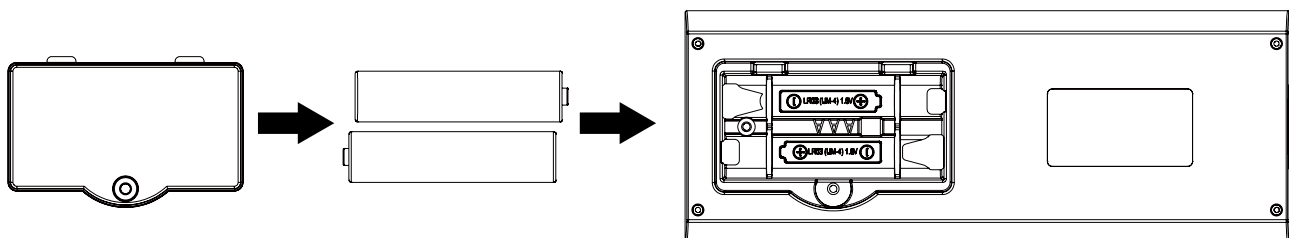
All key function can be accessed from the remote control.



Air Conditioner Remote Control

The functions work the same as your air conditioner's touch controls.

Batteries : Remove the cover on the back of the remote controller and insert the batteries with the (+) and (-) poles pointing in the proper direction.



CAUTION



Use only AAA or IEC R03 1.5V batteries.

Remove the batteries if the remote controller is not used for a month or longer .

Do not attempt to recharge the supplied batteries

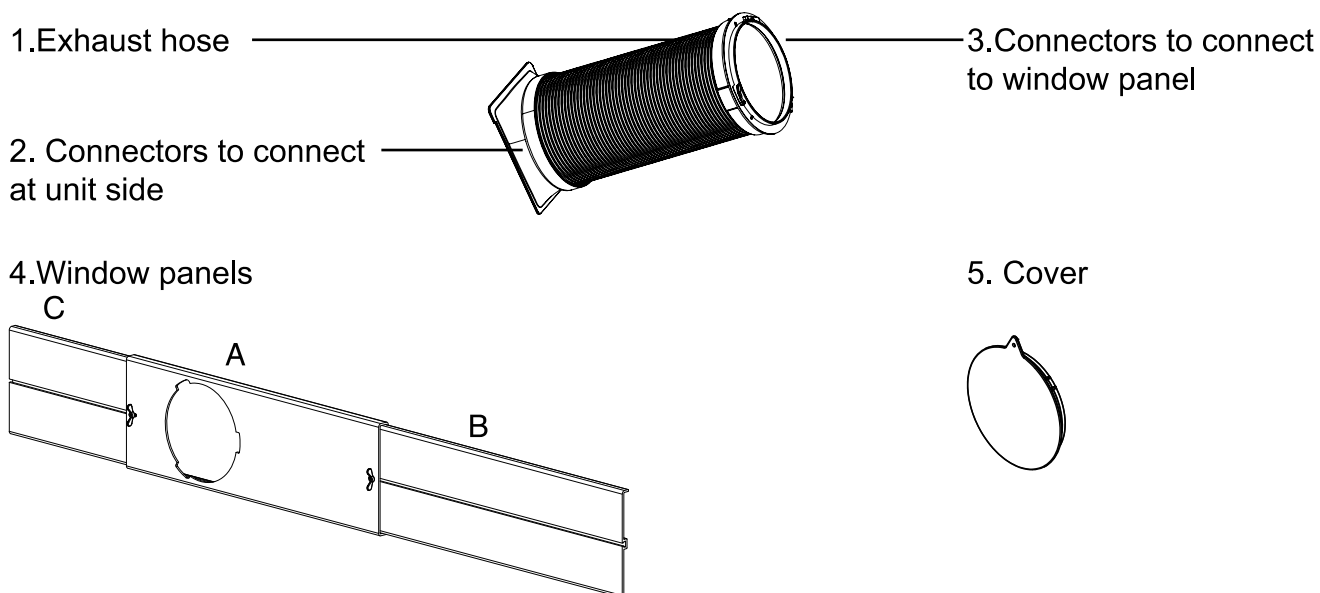
All batteries should be replaced at the same time.

Do not dispose of the batteries in a fire as they may explode.

# INSTALLATION INSTRUCTIONS

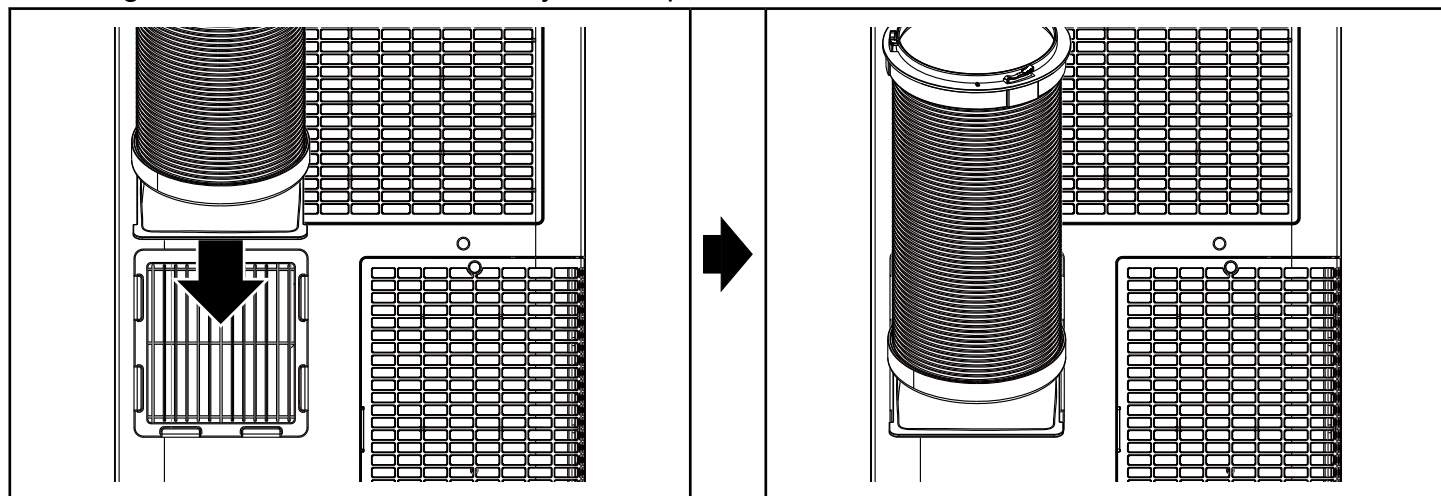
## Accessories Include

- |   |          |
|---|----------|
| 1. Exhaust hose .....   | 1 pieces |
| 2. Connector to connect on back of unit .....                 | 1 pieces |
| 3. Connector to connect main panel .....                      | 1 pieces |
| 4. Window panel and extension panels from 20" up to 47" ..... | 3 pieces |
| 5. Cover .....  | 1 pieces |

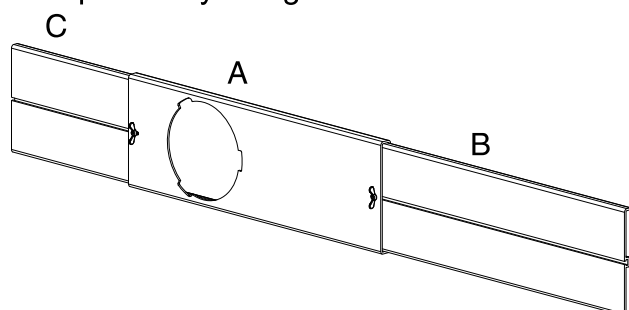


## Installation

1. Sliding in one end of hose assembly to rear panel.

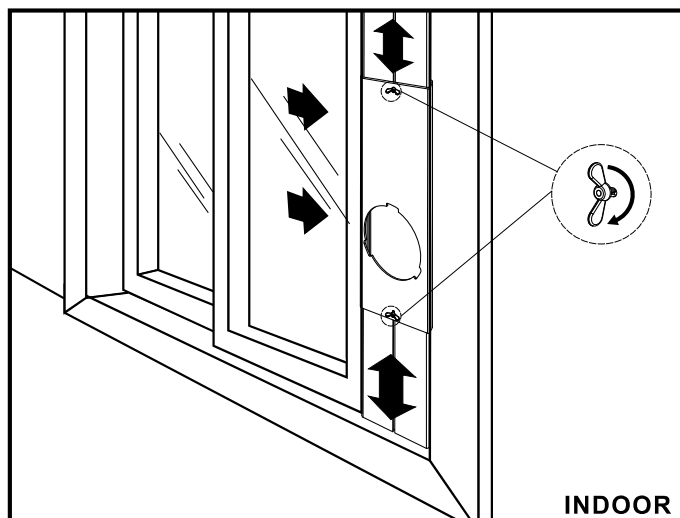
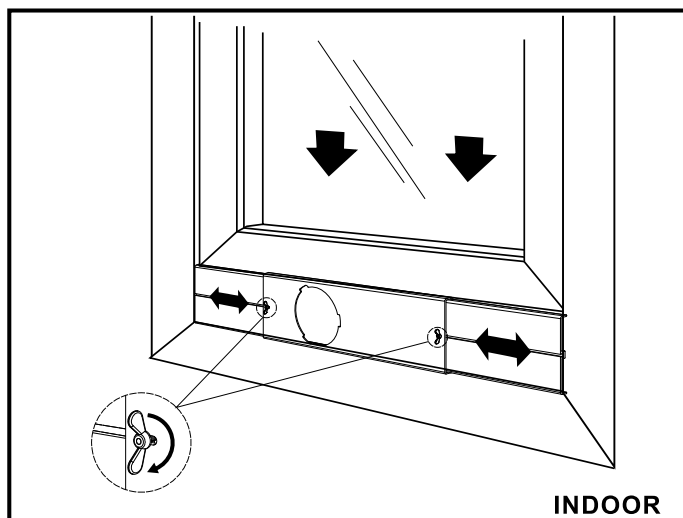


2. Insert the window panels B and C to each end of main panel A. Adjusting to fix the length of window panels by using the screws and nuts mounted on the 2 ends of main panel A.

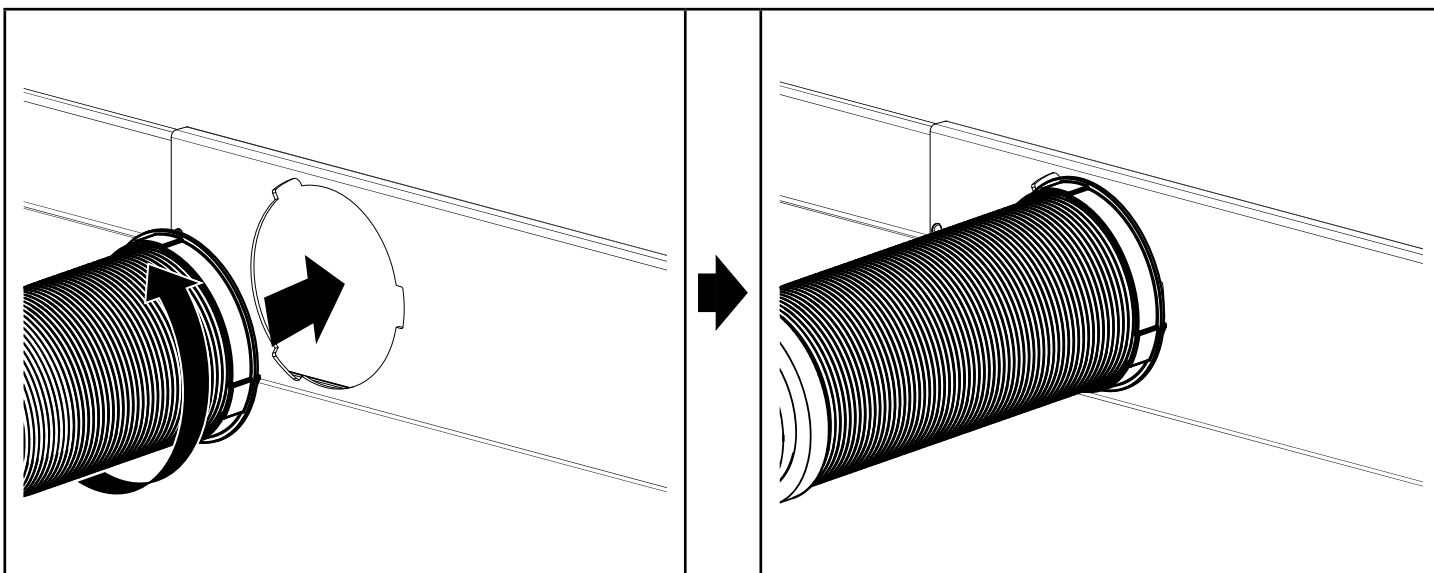


# INSTALLATION INSTRUCTIONS

3. Open the window and place window panels into window. Adjust the extension panels to fit width or height of window by the screw and nut sets mounted on the main panel A.



4. Insert the other end of exhaust hose assembly onto window panel and turn counterclockwise to secure.



5. Plug the power cord into the wall outlet and press the "Reset" button.

7. When removing the portable air conditioner for storage, the window panel may be left in place. Simply place the cover (#5) to cover the hole on the window panel.



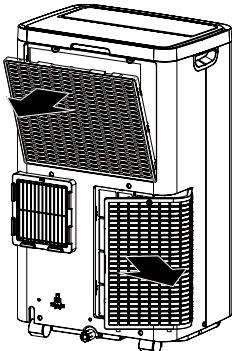

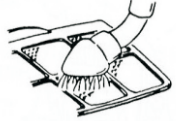



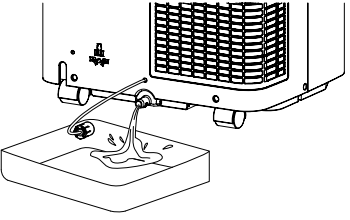
# TROUBLESHOOTING

The following cases may not always be a malfunction, please check it before asking for service.

Trouble	Analysis
Does not run	<ul style="list-style-type: none"><li>·If the protector trip or fuse is blown.</li><li>·Please wait for 3 minutes and start again, protector device may be preventing unit from working.</li><li>·If batteries in the remote control are used up.</li><li>·If the plug is not properly plugged.</li></ul>
Stops running during operation	<ul style="list-style-type: none"><li>·If the set temperature is close to room temperature, you can lower the set temperature.</li><li>·Air outlet be blocked by obstacle. Take the obstacle away.</li></ul>
Runs but does not cool	<ul style="list-style-type: none"><li>·If the door or window open.</li><li>·If there is other heater appliance work nearby, like heater or lamp, etc...</li><li>·The air filter is dirty, please clean it.</li><li>·Air outlet or intake be blocked.</li><li>·Set temperature is too high.</li></ul>
Does not run and water full indicator is lit	<ul style="list-style-type: none"><li>·Drain the water into a prepared container by the drainage pipe on the rear panel of the unit. If it still doesn't work, please consult a qualified technician.</li></ul>
LED display "E1"	<ul style="list-style-type: none"><li>·The temperature sensor error</li></ul>
LED display "E2"	<ul style="list-style-type: none"><li>·The coil sensor error</li></ul>

# CARE AND MAINTENANCE

Appliance maintenance	Air filter maintenance
<p>1. Cut off the power supply</p> <p>Turn off the appliance first before disconnecting from power supply</p> 	<p>It is necessary to clean the air filter after using it for about 100 hours. Clean it as follows:</p>
<p>2. Wipe with a soft dry cloth.</p> <p>If unit is quite dirty use a mild detergent and damp cloth.</p> 	<p>1. Stop the appliance and remove the air filter.</p> <p>Stop the appliance first, then pull back the air filter.</p> 
<p>3. Never use volatile substance such as gasoline or polishing powder to clean the appliance.</p> 	<p>2. Clean and reinstall the air filter</p> <p>If the dirt is conspicuous, wash it with a solution of detergent in lukewarm water. After cleaning, dry it in a shaded and cool place, then reinstall it....</p> 
<p>4. Never sprinkle water onto the main unit.</p> <p><b>Dangerous! Electric shock!</b></p> 	<p>3. Clean the air filter every two weeks If the air conditioner operates in an extremely dusty environment.</p>

Maintenance after using
<p>1.If the appliance will not be used for a long time, be sure to pull out the rubber plug of the drain port underside, in order to drain the water.</p> <p>2.Before storing away run the unit in fan mode only for few hours to dry any moisture on the coils to prevent mold.</p> <p>3.Stop the appliance and pull out the power supply plug, then take out the batteries of remote controller and keep it in a safe place.</p> <p>4.Clean the air filter and reinstall it.</p> <p>5.Remove the air hoses and keep them in a safe place, and cover the hole tightly.</p> 

# SPECIFICATIONS

Figures noted, in the contents are for reference only; variation may result due to application in different countries or regions, and shall be based on the best of practical operation.

Description of product	Air Conditioner
Model	PSH-09-01T
Voltage/Frequency	AC 115V~60Hz
Refrigerant Type	R32
Working Temperature/Humidity	61°F-95°F / 30%-80%RH (Cooling)

Wiring diagram affixed inside the rear panel

"Waste electrical products should not be disposed of with household waste. Please recycle where facilities exist. Check with your local authority or retailer for recycling advice."



# WARNING

- Only install and operate this appliance as outlined in this instruction manual. At all times, use care when using this appliance.
- Do not modify this appliance in any way to avoid danger.
- Electrical equipment and installations regulated by national legislation must be followed.
- Children must not use this appliance unsupervised.
- For safety reasons, anyone with psychological, physical or any medical condition that may impair judgment should only use this appliance when under the supervision of a responsible adult.
- For safety sake, never use a damaged power cable; always refer to the manufacturer or an authorized technical service centre if appliance requires repair.
- It is essential that the appliance is connected to an efficient earth system checked by a qualified electrician.
- The use of extension cables is not recommended.
- The Air filter should be cleaned a minimum of once every two weeks.
- Do not place the air conditioner near any heating appliance.
- The appliance should be transported upright or on its side. Any internal circuit water should be emptied before moving. Do not turn on the appliance for at least one hour before starting it.
- Flammable substances or pressurised containers (eg aerosol cans) should be kept a minimum of 50cms away.
- The appliance should not be installed in rooms containing sulphur, gas or oil.
- Do not disconnect the appliance by pulling on the power cable; always disconnect the appliance before any cleaning or maintenance is undertaken
- Do not store anything on top of the appliance, especially heavy or hot objects.
- Repairs must only be undertaken by authorised service centres of the manufacturer. Failure to comply may be dangerous.
- Do not store the appliance covered with plastic bags.
- Remember the environment when disposing of packaging around the appliance and when the appliance has reached its used by date.
- A warning that the appliance shall be stored in a well-ventilated area where the room size corresponds to the room area as specified for operation.
- A warning to keep ventilation openings clear of obstruction.
- This appliance is not intended for use by persons (including children) with reduced physical, sensory or mental capabilities, or lack of experience and knowledge, unless they have been given supervision or instruction concerning use of the appliance by person responsible for their safety.  
Children should be supervised to ensure that they do not play with the appliance.
- If the SUPPLY CORD is damaged, it must be replaced by the manufacturer, its service agent or similarly qualified persons in order to avoid a hazard.
- The appliance shall be installed in accordance with national wiring regulations.
- Do not operate your air conditioner in a wet room such as a bathroom or laundry room.
- This appliance is only designed for home air-conditioning.

# WARNING

- READ THE MANUAL CAREFULLY BEFORE USING THE APPLIANCE.
- Stagnation of possible leaks of refrigerant gas in unventilated rooms could lead to fire or an explosion hazard should the refrigerant come in contact with electric heaters, stoves or other sources of ignition.
- Use care when storing the appliance to prevent mechanical faults.
- Only persons authorized by an accredited agency certifying their competence to handle refrigerants in compliance with sector legislation should work on refrigerant circuits.
- Maintenance and repairs requiring the assistance of other qualified personnel must be carried out under the supervision of specialists in the use of inflammable refrigerants.
- Do not use means to accelerate the defrosting process or to clean, other than those recommended by the manufacturer.
- The appliance shall be stored in a room without continuously operating ignition sources (for example: open flames, an operating gas appliance or an operating electric heater).
- Do not pierce or burn.
- Be aware that refrigerants may not contain an odour.



## One Year Limited Warranty

SOLEUSAIR warrants the accompanying Portable Air Conditioner to be free of defects in material and workmanship for the applications specified in its operation instruction for a period of ONE (1) year from the date of original retail purchase in the United States.

If the unit exhibits a defect in normal use, SOLEUSAIR. will, at its option, either repair or replace it, free of charge within a reasonable time after the unit is returned during the warranty period.

As a condition to any warranty service obligation, the consumer must present this Warranty Certificate along with a copy of the original purchase invoice.

### THIS WARRANTY DOES NOT COVER:

- Damage, accidental or otherwise, to the unit while in the possession of a consumer not caused by a defect in material or workmanship.
- Damage caused by consumer misuse, tampering, or failure to follow the care and special handling provisions in the instructions.
- Damage to the finish of the case, or other appearance parts caused by wear.
- Damage caused by repairs or alterations of the unit by anyone other than those authorized by SOLEUSAIR.
- Freight and Insurance cost for the warranty service.
- Filter and Accessories.

ALL WARRANTIES, INCLUDING ANY IMPLIED WARRANTY OF MERCHANTABILITY ARE LIMITED TO THE DURATION OF THIS EXPRESS LIMITED WARRANTY. SOLEUSAIR. DISCLAIMS ANY LIABILITY FOR CONSEQUENTIAL OR INCIDENTAL DAMAGES AND IN NO EVENT SHALL SOLEUSAIR 'S LIABILITY EXCEED THE RETAIL VALUE OF THE UNIT FOR BREACH OF ANY WRITTEN OR IMPLIED WARRANTY WITH RESPECT TO THIS UNIT.

This warranty covers only new products purchased from our authorized dealers or retailers. It does not cover used, salvaged, or refurbished products.

As some states do not allow the limitation or exclusion of incidental or consequential damages, or do not allow limitation on implied warranties, the above limitations and exclusions may not apply to you. This warranty gives you specific legal rights, and you may also have other rights that vary from state to state.

For Technical Support and Warranty Service

Please 1-866-443-5685

[Www.ftl411.com](http://www.ftl411.com)



